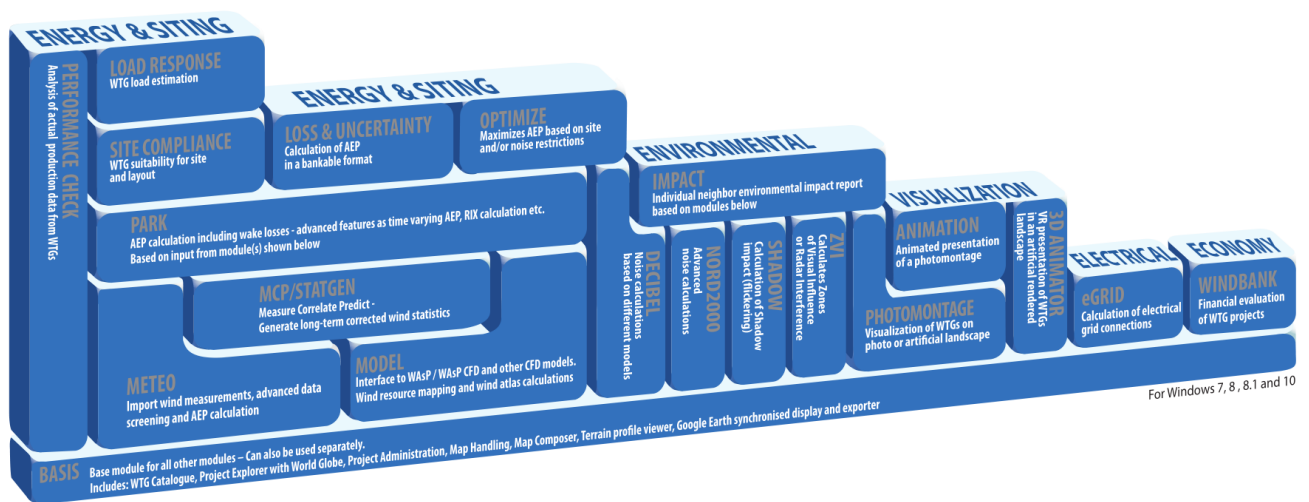


1 Introduction, installation, activation

1.0 windPRO introduction, license conditions, service	8
1.0.1 Introduction	8
1.0.2 License Conditions	8
1.0.3 Service and Updates	9
1.1 Installation of windPRO	10
1.2 License activation	11
1.2.1 New windPRO users	11
1.2.2 Existing windPRO users/manual license activation	14
1.3 License deactivation	15
1.4 Online activation validation	15
Contacts	16



Overview of the windPRO modules

1 windPRO introduction, license conditions, service

1.0.1 Introduction

windPRO is a Windows 7/8/10 based software suite for the design, development and assessment of wind energy projects. windPRO consists of a number of modules, each of which has its purpose. The users are free to combine the modules according to their needs and budget. windPRO is based on more than 25 years of experience in the development of user-friendly software tools for wind energy calculations. The experience gained from this, and from the windPRO team participating in the development of thousands of projects, is applied in the expert system windPRO. The software suite is offered to everyone dealing with project development, planning, sale and approval of wind energy projects.

The windPRO Philosophy: Object Orientated Design/strong graphic interface/Online data

The windPRO philosophy is Object Oriented Design. A wind energy project consists of a number of objects among which the turbines (WTGs) are a key element. The program distinguishes between existing and new WTGs and this makes it possible to calculate, for instance, the energy yield or environmental impact from the new WTGs with or without the influence from the existing WTGs.

An object is established on background maps. Any map can be used with the built-in geo reference tool or easily downloaded from EMD's Online-Server service and used with only a few mouse clicks. Similarly, digital elevation models can be established manually with the powerful digitizing tools or simply downloaded from EMD's Online-Server service.

Importing, screening and analyzing measured wind data as well as long-term correcting is based on the most comprehensive tools, guiding the user through this very important and complicated task.

Databases/Online data

The most comprehensive wind turbine database available is probably the one used in windPRO as it has been updated with all market-relevant turbines since the mid-1980s. The database holds all publicly-available and relevant technical specifications for the most important calculations such as energy yield, noise, visualization. With Online data you get access to background maps, wind data, turbine data, elevation data and roughness data and much more.

Google Earth™ export and synchronized Google Earth viewer

Having created a wind energy project, a wind resource map or a photomontage in windPRO, a visual presentation in Google Earth is just one mouse click away. From Google Earth it's easy to e-mail the presentation file to share your project ideas with your business partners or a wider audience. With the synchronized Google Earth viewer, you can see your object positions on Google Earth and thereby use Google Earth as your background map. With the rapid improvement of the quality of the Google maps this makes project development even easier.

Languages, versions and report modules

windPRO in its full language version is available in English, French, Spanish, German, Chinese, Danish and Swedish. Several additional print languages are available. Please see a list of available languages on www.emd.dk. The manual can be found in various languages. See help.emd.dk

Calculation modules and reports

windPRO generates reports designed to communicate the results clearly and directly to investors, operators or approving authorities as well as background reports with detailed analyses for evaluation purposes.

1.0.2 License Conditions

The independent foundation Energi- og Miljødata holds all Intellectual Property Rights to the windPRO software, which is continuously developed by EMD International A/S and distributed worldwide through a

network of appointed agents. The manual and other documentation from the windPRO software are copyrighted and all rights reserved.

The license conditions can be found on the EMD website: www.emd.dk

1.0.3 Service and Updates

A valid service agreement with EMD means that the user gets access to the following services:

- a) Free e-mail or telephone hotline service covering advice and guidance regarding the use of the software.
- b) The latest version of the software and free update of the by EMD maintained databases.

Having the latest version also secures access to online data from other data providers. EMD does not remove access to online data from older versions, but we do not maintain the interface, and there is thereby no security for how long time the old version will work with online data after a new version is released.

The user pays an annual service fee of 20% of the current list price for modules covered by his License Agreement.



Software updates are not issued at regular intervals, but typically once a year. It is possible to download improvements and updates from our website www.emd.dk.

For users without a service agreement, or who have cancelled a previous agreement, any future software update charge will be calculated based from the date service expired on the license. Please contact us for further information.

Based on our long experience within wind energy project calculations, windPRO is designed as an expert system, both a valuable tool in your daily work, but also a tool, which continuously trains you to develop better projects.

1.1 Installation of windPRO

Download and install the latest windPRO edition from the EMD homepage, www.emd.dk or www.windpro.com. Alternatively, install from the USB-stick provided as part of our extensive training courses.

To install windPRO double-click on the file windPRO-3.2.xxx.msi

Follow all instructions on the screen. The default installation path is:
C:\Program files\EMD\windPRO3.2\

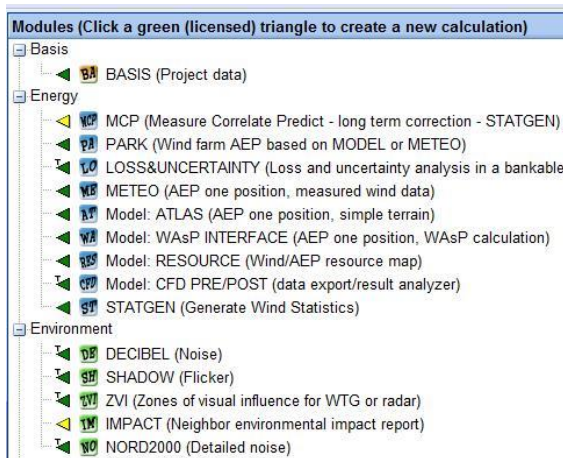
A windPRO data folder is also created, with a default path:
C:\Users\\Documents\windPRO Data

If you wish other users to have read and write access, put the data folder in the Windows documents folder shared by all users. The location is typically:
C:\Users\Public\Documents\

Placing the windPRO data folder on a network drive might affect the performance of windPRO. For the best performance place the windPRO data folder on a local hard drive.

Using windPRO requires online activation of your license file. If you do not activate your license file, windPRO will start in demo mode, where you cannot calculate or print or save a project. Upon purchase of windPRO modules, EMD International A/S will provide you with a license file opening the licensed modules.

- Licensed modules are shown with a green arrow in the windPRO main menu
- Non-licensed modules are shown with a yellow arrow.
- Arrows marked with “T” are time-limited licenses.

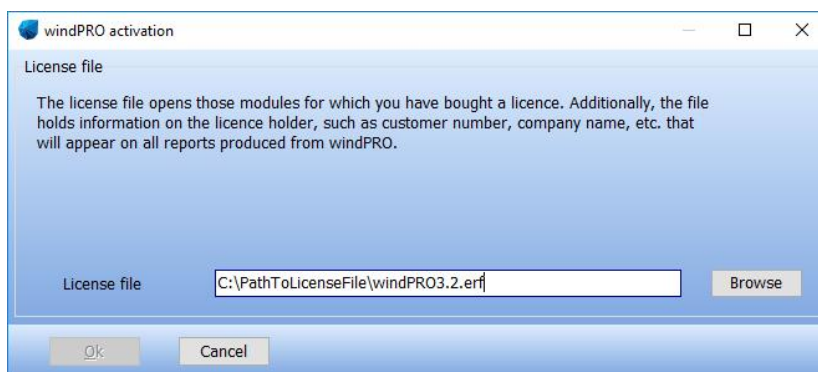


1.2 License activation

A license file will be sent as an attachment to an e-mail. Please contact EMD, if you change your e-mail address or do not receive the license file. The license file will be sent to the primary contact that EMD has on record for each company holding a current license. If you are in any doubt as to the primary contact details, please contact EMD for information.

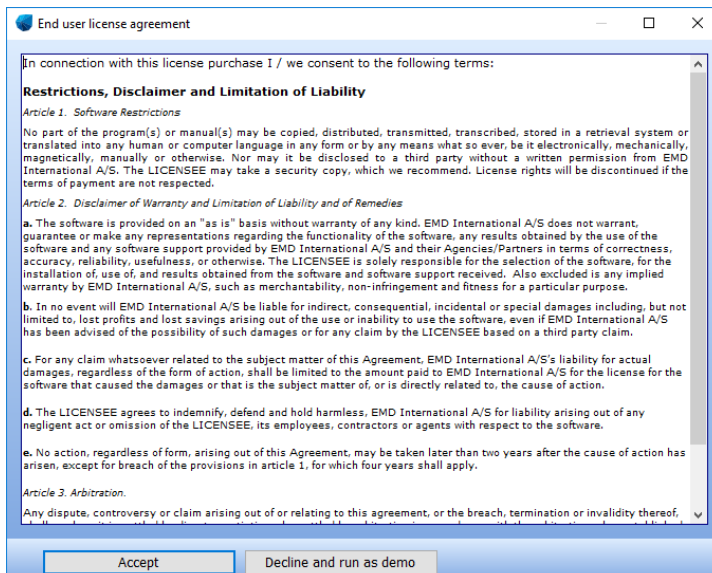
1.2.1 New windPRO users

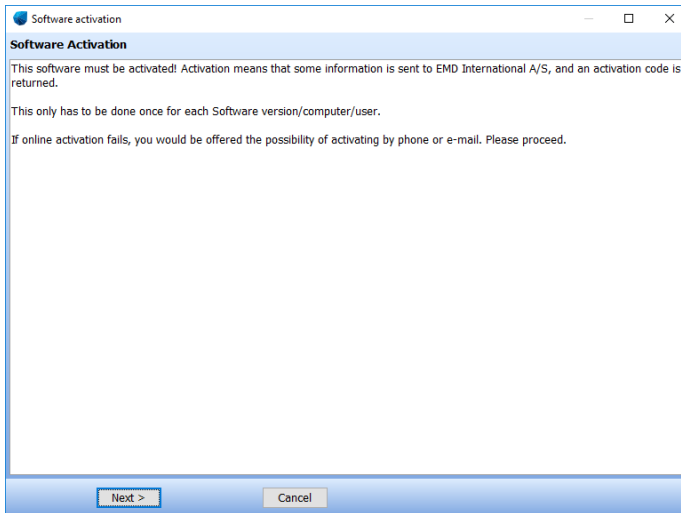
When starting windPRO for the first time, you will first have to select your program language. Then windPRO will automatically ask for a license file.



The license file as received by e-mail should be saved on your computer from your e-mail program and selected using the Browse button from the screen above.

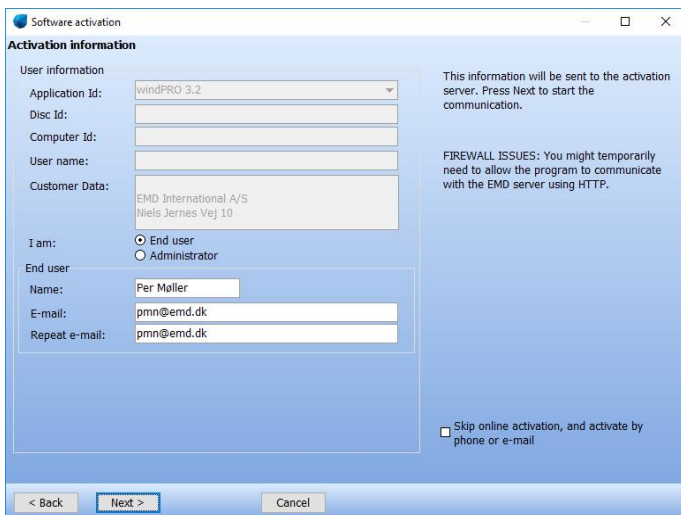
After reading the license file, the *End user license agreement* must be accepted





Each user is identified by email address and each user is allowed two installations, for example on an office and a home computer or similar. In order to activate the user must go through the activation procedure.

Press Next to continue the activation process.

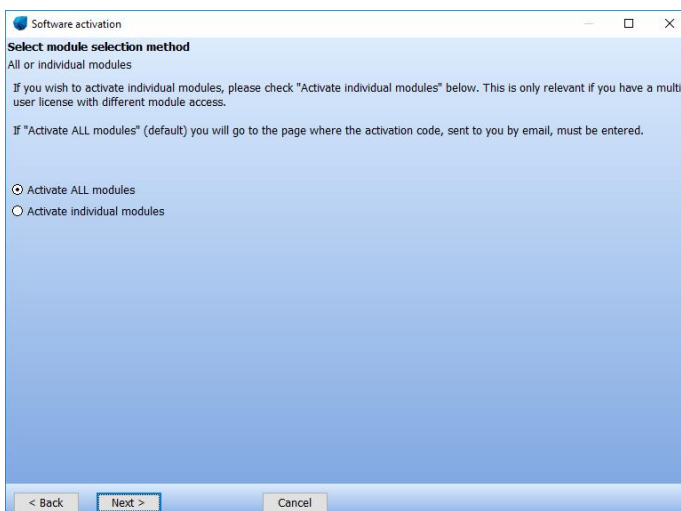


On this screen the data to be sent to the activation server is displayed. The faded texts are read by the software (computer ID, user name etc.).

If you are end-user you fill in your name and email address. A license holder is allowed to use as many email addresses as you have licenses and each email address can be used to activate a license twice.

If you are the administrator you can additionally add your own email address. That will make the activation code come to you instead of the end-user, but the administrator address does not count to the allowed number of licenses.

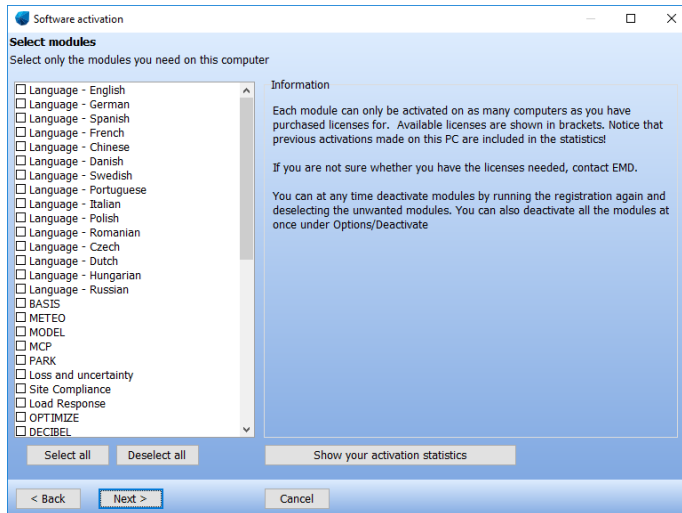
The “Skip online activation...” option is available for users, who cannot use the normal online activation. Check this to activate by e-mail or phone.



It is possible to buy a different number of licenses for each module. A user who is only going to make visualizations may not need the energy modules, while his or her colleagues may need energy modules but not visualization modules.

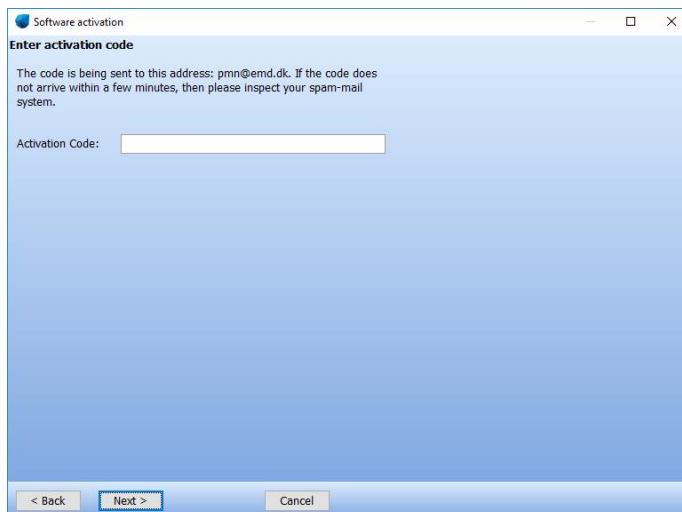
If all modules bought by the user should be activated select Activate all modules.

If instead only a selection of modules should be activated then select Activate individual modules.



If “individual modules” was selected then you must point out the ones to activate. Note that you always need to activate at least one BASIS module and one Language module in order to run windPRO in non-demo mode.

The list will show you all your available modules. If the module you wish to activate is not in the list then you do not have a valid license for it and you may contact EMD. By showing the activation statistics you can see who are currently using the licenses in the company.



Next step is to enter the activation code. At this stage you will have received an activation code in your email inbox. The code was sent to the email address you typed in previously.



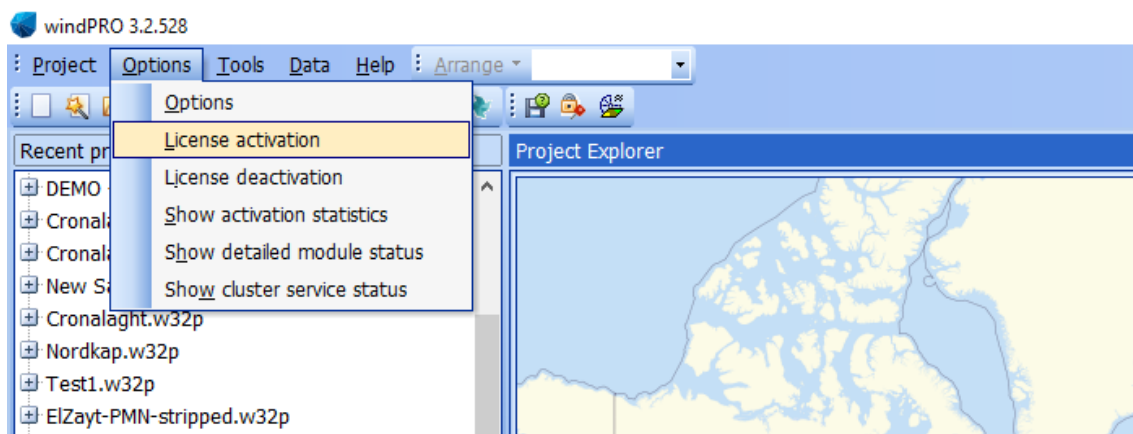
Your license has now been successfully activated.



The activation process is concluded by showing you the About window for windPRO on this computer. Here you can see the license information on your organization. This is the information included on all printouts made with windPRO. You can also see your current version of windPRO. If you suspect your version is not up-to-date you can visit the windPRO update page and check if newer versions are available.

1.2.2 Existing windPRO users/manual license activation

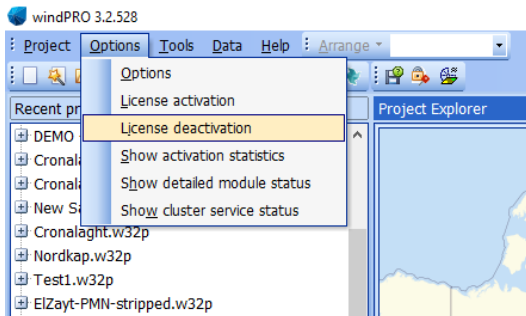
If an additional module is purchased, or the license holder info is updated or for some other reasons manual activation is required, please start the license activation this way:



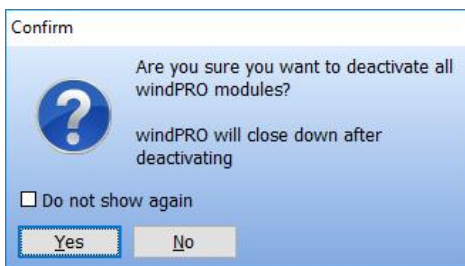
Open windPRO and click “Options” and then “License Activation”. Follow the procedure as described previously.

1.3 License deactivation

If you need to transfer your license to another computer or another user you will initially need to deactivate your license.



Select "License deactivation" from the Options menu.

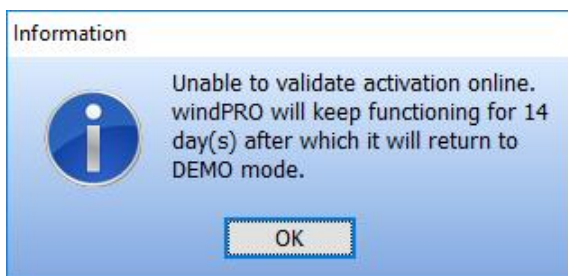


Confirm that you want to deactivate and windPRO will shut down. The licenses are now released to be used on another computer or by another user.

Note, that if you activated windPRO on two computers using your e-mail address you need to deactivate both before the license is released for another user.

1.4 Online activation validation

Please notice that windPRO will perform an online activation validation when starting up. This means that if you are starting windPRO without an internet connection, you will see the following dialog.



You will be able to continue the session and work with windPRO without any limitations. But within 14 days you need to start windPRO with an active internet connection in order to validate your activation. Otherwise windPRO will return to DEMO mode.

Contacts



EMD International A/S

Niels Jernes Vej 10
9220 Aalborg Ø
Denmark

Tel: +45 96354444
emd@emd.dk

EMD Spain

Normawind
Parc Tecnològic BCN Nord,
Carrer Marie Curie, 8
08042 Barcelona
Spain

Tel:+34 93 241 12 75
info@normawind.com

EMD South America

EAPC Sur, S.,R.L.
Fitz roy 1466 D
C1414CHT Ciudad
Autónoma de Buenos
Aires
Argentina

Tel: +54 11 4772 0163
m.thamhain@eapcwindenergy.com

EMD China

CEPRI - China Electric Power
Research Institute
No.15 Xiaoying East Road,
Qinghe, Beijing 100192,
P.R. China

Tel: +86-10-82813172-120
xrwang@epri.sgcc.com.cn

EMD Deutschland GbR

Breitscheidstraße 6
34119 Kassel
Germany

Tel:+49 (0)561 310 59-60
emd-de@emd.dk

EMD UK

The Wind Consultancy Service
17 Ford Lane
Morton, Bourne
PE10 0RQ.
England

Tel:+44 (0) 1778-571786
ph@emd.dk

EMD Brasil

Rua Vera Linhares de Andrade,
2845
CEP 88034-700, Itacorubi,
Florianópolis/SC
Brasil

Tel.: +55 48 3232 9100
contato@emdbrasil.com

EMD China

Beijing Leviathan Technology Co. Ltd
Room 1918, Building A, Shi Ao
Int. Center No.101
Shaoyaoju Beili
Changyang District, Beijing
P.R. China

Tel: +8610-84351655
srb@mt168.com.cn

EMD France

55, rue Saint-Cléophas
34070 Montpellier
France

Tel: +33 (0)1 44 64 13 81
france@emd.dk

EMD North America

EAPC Wind Energy
3100 DeMers Avenue
Grand Forks,
ND 58201
USA

Tel.: +1-701-775-3000
wind@eapc.net

EMD Middle East

T-EMD Ltd. Sti.
Yakut Sokak,
Huzur Apt. No:39/6
Bakırköy 34140
İstanbul
Turkiye

Tel.: +90 2125438848
ft@emd.dk