

4 EMD Cluster Services

4	EMD CLUSTER SERVICES	2
4.1	Introduction to EMD CLUSTER SERVICES	2
4.2	WAsP-CFD Cluster Calculation	3
4.2.1	Model Overview	3
4.2.2	System Requirements.....	4
4.2.3	Setup of a WAsP-CFD Calculation	4
4.3	EMD-WRF mesoscale cluster calculation.....	9
4.3.1	Calculation overview	9
4.3.2	Price structure and Meso-Credits	10
4.3.3	Setting up calculation in windPRO.....	10

4 EMD CLUSTER SERVICES

4.1 Introduction to EMD CLUSTER SERVICES

At EMD we installed a High Performance Computer (HPC) cluster in 2013 and again in 2018. This cluster gives windPRO users access to run calculations that cannot be run or would be too time consuming to run on standard PCs. The computing power of the HPC cluster at EMD is comparable to 2500 standard laptops. Figure 1 shows part of EMD's HPC cluster.

At the moment EMD-Cluster services includes two services available via windPRO:

- WAsP-CFD flow calculations:
- Run high resolution wind flow CFD model from DTU (Ellipsys3D¹)
- On-demand WRF mesoscale model calculations:
- Create long-term time series using the Weather Research Forecast (WRF²) model



Figure 1 - Part of HPC Cluster installed at EMD

Operating and maintaining an HPC cluster is a complex task and running the advanced models requires a detailed setup of many software components. The windPRO user does not have to worry about all this complexity, as all calculations are easily set up in windPRO. Once a calculation is set up it is sent to the HPC cluster via the internet and when the calculation is done the user will be notified via e-mail and the results can be downloaded and used in windPRO.

An HPC cluster is a large investment, partly due to the hardware itself but also partly because of the power consumption and cooling requirements in the data centre. Therefore, the user must pay all services separately and not as part of a windPRO module. This is handled by purchasing "cluster credits" at EMD. The straight forward approach is that you purchase the credits you need when you need them (or in a bunch for later use). You can also subscribe to packages where you automatically receive new credits e.g. every month. For further details regarding pricing please refer to: <http://www.emd.dk/windPRO/wasp-products/wasp-cfd/subscription/>

The following sections will describe how to use the EMD Cluster services in windPRO.

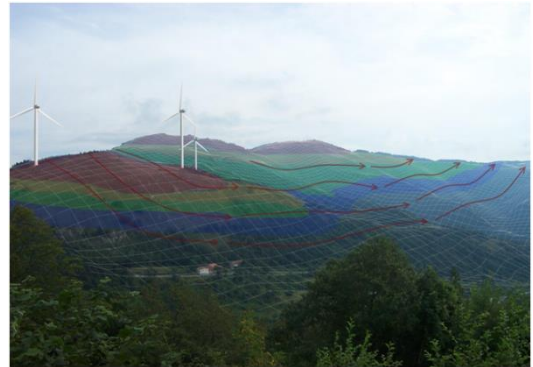
¹ <http://www.wasp.dk/Software/WAsP-CFD/Flow-model>

² <http://www.wrf-model.org/index.php>

4.2 WAsP-CFD Cluster Calculation

The application of wind energy in very complex terrain requires accurate procedures for deriving reliable estimates of the wind resource. Traditionally, the modelling-workhorse for the wind analysts has been the linearized flow models, with WAsP as the industry standard.

However, recent years have seen the development of non-linear CFD-models dedicated for wind energy purposes. It is now possible to use these non-linear models to obtain fairly reliable alternative estimates in the energy yield assessments. If the analyses are done the right way - such as ensuring grid-independent results - the non-linear CFD analysis can render results that can be documented to have - in general - a lower uncertainty than what is obtained by the linear models.



Historically, CFD have had two main drawbacks:

- CFD requires highly trained users
- CFD requires large computational resources in order to minimize model- and numerical errors

WAsP-CFD, however, has its own unique solutions to these problems:

- The CFD computations are fully automatic and the setup is similar to normal WAsP calculations
- Since the actual CFD calculations runs on a remote super computer the user doesn't have to worry about computational resources and doesn't have to compromise between quality and time to run the calculation

4.2.1 Model Overview

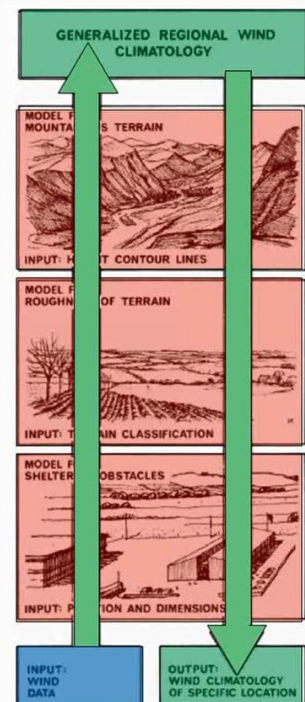
The basis of the traditional WAsP model is a superposition of four sub-models (see the figure to the right):

- 1) a model to calculate terrain speed-ups (IBZ),
- 2) a model to calculate the effect of roughness transitions,
- 3) a model that predicts the vertical flow perturbations due to non-neutral atmospheric stability,
- 4) a model to predict reductions caused by obstacles.

In the WAsP-CFD solution flow perturbations of model components 1) and 2) are replaced by the combined terrain and roughness flow perturbations predicted by the non-linear Ellipsys3D CFD solver running on EMD's cluster. The WAsP model components 1) and 2) assume neutral stability; this is also the case for the flow perturbations predicted by the WAsP-CFD counterpart. The CFD flow perturbations are relative to an upstream average roughness named 'reference' or 'mesoscale' roughness which defines the inlet profile for the CFD solver for each of the 36 model sectors.

Execution of the model is fully automatic, i.e. the WAsP-CFD model takes care of setting up the terrain model based on your terrain model, to make a calculation mesh, to apply proper boundary conditions, to run the analysis to obtain results at a sufficient convergence criteria and finally to submit the results (speed-ups and wind-veer or back) to you for further analysis and use with your own wind data.

An overview of some of the automatic modelling steps is outlined in the figures below.



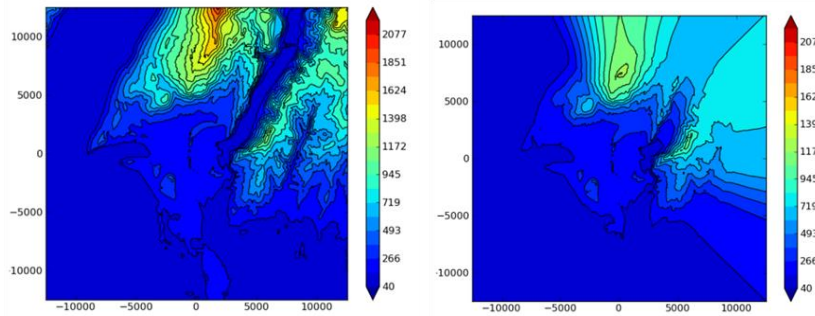


Figure 2 - Height contours user specified and “massaged” by WAsP CFD

You can read more about WAsP-CFD here:

<http://www.wasp.dk/-/media/Sites/WASP/Products/CFD/WAsP-CFD-A-new-beginning-in-wind-resource-assessment.ashx?la=da>

The actual flow model used in WAsP-CFD is described here:

<http://www.wasp.dk/waspcfd#flow-model>

4.2.2 System Requirements

WAsP-CFD does not require any specific hardware configuration as the computationally demanding part of the CFD analysis is made on EMD’s HPC cluster. An internet connection is required to upload the terrain and roughness model and download the flow-analysis results. In order to keep your terrain model safe, all communication from your PC to the HPC cluster is via a highly encrypted and protected HTTPS-connection.

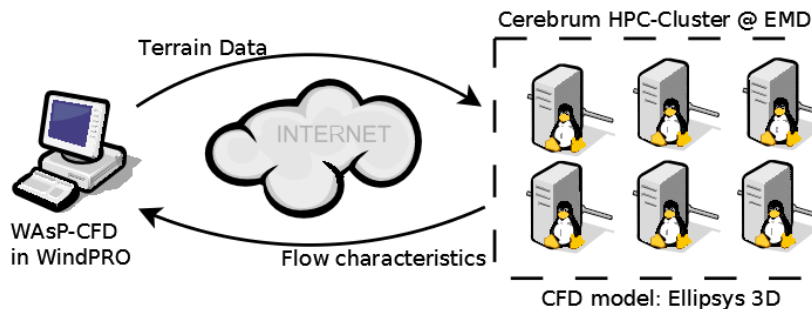


Figure 3 - Illustrates flow of data to and from the client

In terms of software licenses, you will need the following in order to operate the WAsP-CFD model in windPRO:

- WAsP 11 (or higher)
- WindPRO 2.9 (or higher) with the MODEL module (or other relevant energy modules)
- Calculation credits

Calculation credits can be purchased from the EMD Sales department, see more in the section below. A credit covers a tile (calculation area) of 2 km x 2 km.

If you have other versions than WAsP 11 installed on your computer, select the version 11 before starting your CFD jobs.

4.2.3 Setup of a WAsP-CFD Calculation

The WAsP-CFD analysis is very similar to the WAsP analysis and it requires the same terrain data but to a larger extension, at least 20km from the area of interest in all direction. You need a site data object to link the terrain data to the CFD calculation, similar to a 'classic' WAsP calculation. The purpose of the Site data object should be 'For use in CFD calculation'.

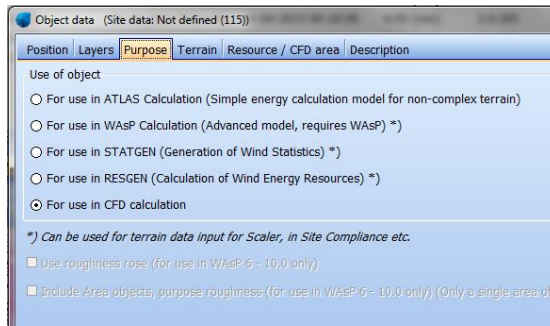


Figure 4 - Purpose of Site Data object when used for WASP-CFD

4.2.3.1 Terrain tab - Elevation / Orography model

Height data are required within a range of at least 20km from the site. If needed, existing elevation data can be extended directly via the line or the grid objects.

When height data is available in a grid object, it will be converted automatically to lines when the CFD calculation is run (the current version of WASP-CFD needs indeed data as lines). The setup of the grid elevation object should be with a contour separation of 10 m or 20 m in the outer zones as this gives a sufficient degree of detail, but in the local zone (about 8 km around the site), the contour separation should preferably be 5 m if justified by the underlying data. The contour separation is defined under the 'WASP-setup' tab of the grid object as shown below.

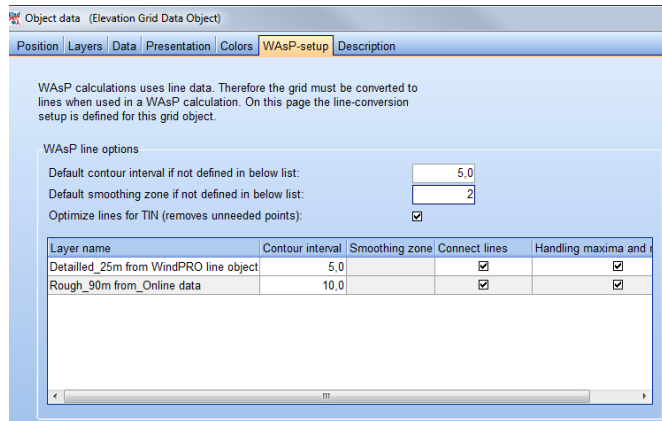


Figure 5 - Setting elevation data in an elevation grid object

4.2.3.2 Terrain tab - Roughness model

The surface roughness model must be defined as lines and should cover an area not less than 20 km from the area of interest.

4.2.3.3 CFD-areas (Tiles)

The model output from the cluster part of the WASP-CFD calculation is returned as area(s) or tile(s) each 2km by 2km in size. It is important that all the turbines, measurement mast(s) or resource areas are covered by one or more CFD areas. There is no limitation on how the areas/tiles may be placed, they may be aligned by edges, separated by some distance or even overlapping.

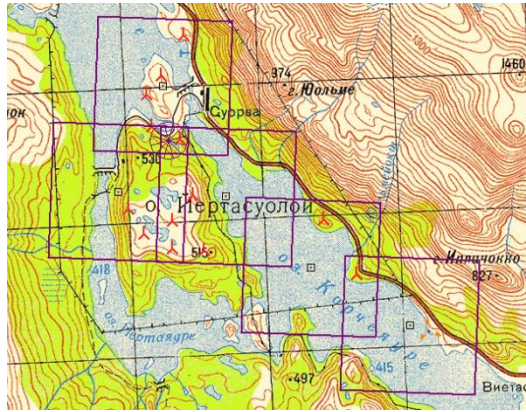


Figure 6 - Five WAsP-CFD tiles defined on a site

The CFD-areas are created from the site data object either directly at the tab 'Resource / CFD Area' by pressing the 'Add' button or the 'Auto create' button. The latter requires a WTG Area to define the area of interest. The coordinates of the centre of tile and the name are editable (but can also be changed from the map, once the site data object is closed).

Pressing the 'Auto create' button will create the required tiles to cover a given WTG area object.

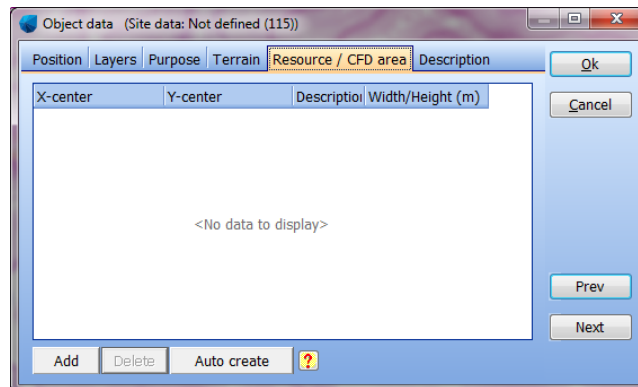


Figure 7 - Auto create can be used to generate tiles from WTG area object

Click on OK to close and create the site data object.

4.2.3.4 Edit CFD tiles on the map

Once the Site Data Object with CFD purpose is closed, right-click to bring it into 'Edit mode' (see below).

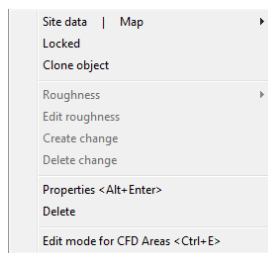


Figure 8 - Use Edit mode for CFD Areas to manipulate tiles directly on the map

When the site data object is in Edit mode it is possible to:

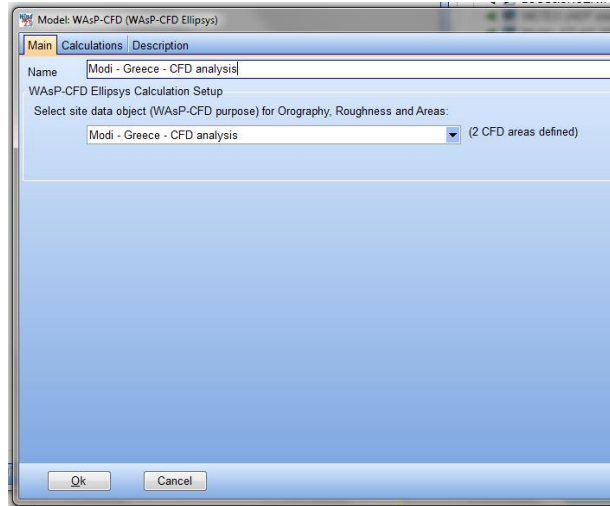
- Move the individual CFD-squares by dragging in the centre of the square.
- Add new areas by right-clicking the site data object and choosing 'Add CFD area'.
- Edit the properties of an area by right-clicking the centre of the area and choosing "Edit area properties". Only the coordinates of the centre and the name of the area can be changed.
- Delete an area by right-clicking the centre of the area and choosing "Delete".

When you are done with the editing the CFD areas from the map, it is necessary to right-click on the Site Data Object and uncheck "Edit mode for CFD areas".

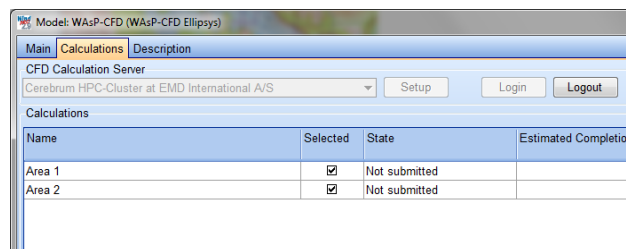
4.2.3.5 WAsP-CFD calculation

Assuming you have the relevant number of CFD calculation credits, once the data has been prepared, the CFD calculations has to be started on the HPC cluster. In order to this follow this procedure:

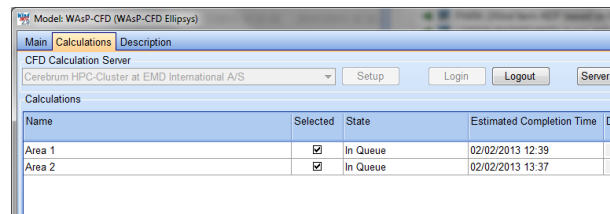
- Create a new Model: WAsP-CFD calculation from the WindPRO main calculation window.
- Name the calculation and select the site data object containing your CFD-areas.



- Go-to the tab-sheet named 'Calculations'.
- Press the Login button.
- Choose which areas to include in the CFD-analysis (by checking the boxes in the selected column).



- Press the 'Start selected' button
- Confirm that you want to start
- The job is started on the server by uploading the data (orography, roughness and tile areas)
- Once the job is started you can see the estimated completion time



- Press Ok to close calculation
- Save your windPRO project

After this you can close windPRO or continue any other work in windPRO while the calculations are running on the cluster.

4.2.3.6 Download results

Once each area has been calculated, an e-mail will be sent to the user simply saying “Job completed OK”. The e-mail also contains a single page PDF report on the calculation results. To download the results:

- Start windPRO and load the project
- Open the CFD calculation and go to the 'Calculations' tab
- Login to the cluster (this process is automatic and you do not need to be supplied with any login details)
- Make sure “Add as result layer” is checked
- In the table you will be able to see that the 'Download Results' button is now available.
- Click the button to download the results and add them as result layers.

The CFD result file(s) will be placed in a sub-directory in the project folder named '/OnlineCFDResults'. The extension of the file(s) is .CFDRES.

4.3 EMD-WRF Mesoscale cluster calculation

High quality mesoscale data is becoming a more and more important factor in wind energy calculations. The data has a wide variety of uses in wind farm planning, such as:

- Long-term correcting measurements
- Initial siting purposes
- Production follow up
- Estimating icing losses
- Estimating shadow and flicker using solar radiation parameters
- Evaluate the atmospheric stability

For several years windPRO has provided free online data such as MERRA, NCAR, CFSR etc. which has been used for long-term correction in MCP. The spatial resolution of those datasets is in the range of 70-150 km so even though they in some areas have a good correlation with regards to wind speed they cannot capture mesoscale effects in the wind climate which occur on the spatial scales of few kilometres.

In windPRO 2.9 we introduced the mesoscale dataset 'EMD-ConWx Europe' which covers central parts of Europe and has a spatial resolution of approx. 3 km. The dataset is a pre-run dataset which means that the data have already been processed and can be downloaded directly like other online datasets in windPRO, with the exception that an annual subscription is required. The EMD-ConWx dataset is processed using the Weather Research Forecast (WRF) model on the HPC cluster at EMD. The dataset uses ERA-Interim global boundary data from ECMWF.

Since then, several more EMD-WRF datasets have been made available for various locations around the World (e.g. Middle East, Indonesia, South Africa, South Korea and India). The goal for EMD is to provide more of these pre-run datasets in the future, but until more of them are available we provide a service for windPRO users that will allow them to run on-demand WRF mesoscale calculations anywhere in the world. So instead of a pre-run dataset like 'EMD-WRF Middle East', the on-demand service is run as required for the limited area surrounding a single point of interest.

Besides being worldwide the on-demand solution also has a number of other advantages compared to the pre-run EMD-ConWx data:

- It uses the newest version of the WRF model
- It has a better background roughness model
- It has better solar radiation results
- It has turbulence information for all years simulated
- More climate parameters are available

4.3.1 Calculation overview

The WRF model consists of two main components, namely WPS and WRF. WPS is the pre-processing tool that prepares terrain and meteorological data for WRF. In EMD-WRF we use the following data for WPS:

- Terrain data from SRTM (elevation) and GlobCover (landuse)
- Meteorological data can come from ERA-Interim or MERRA-2 at the moment

Once the data are prepared for the WRF model it is set up to run the domain based on the location given by the user in windPRO. The model will then run for the period defined by the user. The current spatial resolution is 3 km and the model simulates every 9 seconds in time. Each hour the current state of the model is extracted and converted into a time series. Besides the time series data, the result will also include the terrain (orography and roughness) from the mesoscale simulation to be used in downscaling calculations in windPRO.

The entire process from downloading boundary data to getting end result as time series is fully automated and not something the user has to worry about.

4.3.1.1 Parameters in the output time series

The main results included in the time series from EMD-WRF on-demand are:

- Wind speed/direction and turbulence in 10, 25, 50, 75, 100, 150 and 200 meters.

- Temperature in 2 and 100 meters.
- Detailed solar radiation
- Surface pressure, humidity, precipitation, visibility, cloud cover, etc.

4.3.2 Price structure and Meso-Credits

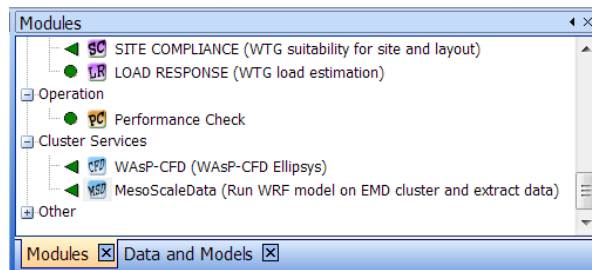
No particular modules are required in order to run EMD-WRF on-demand calculations, though the data could be used in modules such as METEO and MCP. Instead, the calculations are paid for when you request EMD to perform the calculations and the price depends on how long a time series you request. We introduce the concept of a meso-credit. A single meso-credit will allow you to get 1 month of hourly time series data from one point. So for a 10-year time series the cost will be 12 (months) * 10 (years) = 120 meso-credits. The meso-credits are purchased by contacting sales@emd.dk or online at <http://www.emd.dk/windpro/online-ordering/>.

4.3.3 Setting up calculation in windPRO

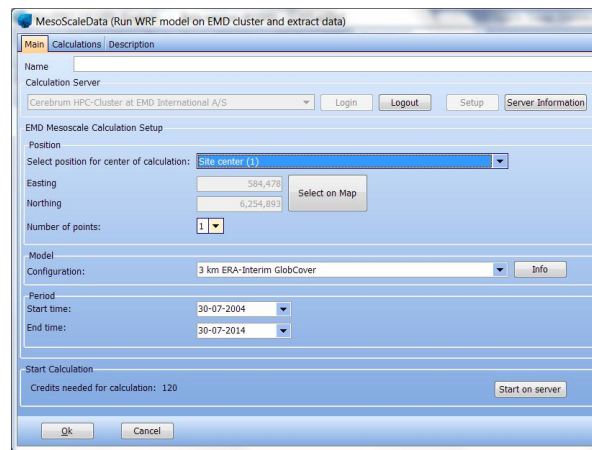
Running an EMD-WRF on-demand calculation is easy and simple - you only need to define:

- Geo Location
- Period
- Boundary data

Once you have bought sufficient meso-credits, you can start a new calculation by creating a MesoScaleData calculation in windPRO.



This will open the calculation setup window.

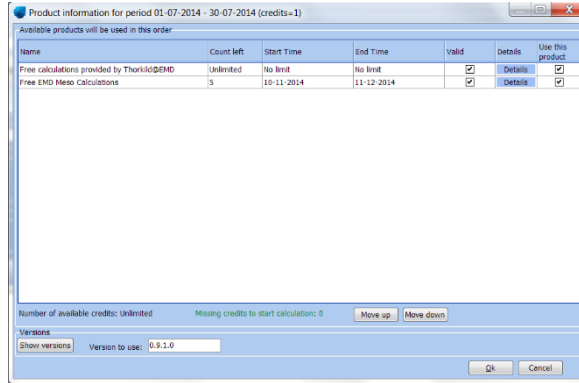


You should start by pressing the Login button to connect to the computer cluster at EMD (this process is automatic and you do not need to be supplied with any login details). The next step is to name the calculation and then select the position of the calculation. The position can be defined based on another object in windPRO, it can be manually entered (user defined) or you can select the position by a click on the map via the button 'Select on map'.

The model configuration in the setup allows you to select which model to run. At the moment the only option you have is to select the boundary data for the calculation. This can be either ERA-Interim or MERRA-2. The recommended option is ERA-Interim as this boundary data typically results in the best performance and was used in the 'EMD-ConWx Europe' dataset. However, there can be places where MERRA-2 will give better results, but for now, there are no clear recommendations except to just to use ERA-Interim.

The last thing to define before starting the calculation is the period you want. If you have measurements on the site you can start by running the period where you have data and then later on you can request the full period you need (10-20 years).

Once you have set up everything, it is time to start the calculation on the computer cluster at EMD. This is done by pressing the “Start on Server” button. This will give you the following window.



In this window you can see the meso-credits that you have purchased and select in which order they should be used. In the window you can also see how many credits that will be used for the calculation (1 meso-credit in this case). Once you are ready press the ‘Ok’ button to go ahead and start the calculation. You will see one more confirmation dialog before the calculation is actually started. Simply click ‘Yes’ if you are sure you want to start the calculation.

When the calculation has started you will see the ‘Calculations’ tab that shows you the calculation you just started and also show the estimated completion time for the job. During busy periods at the EMD cluster there will be a longer waiting time. Click the ‘Ok’ button and save the project.

Once the job has completed you will receive an e-mail confirming that the results can be downloaded in windPRO.

Open the project in windPRO and find the MesoScaleData calculation and open it. On the “Calculations” tab you should see the calculation you started and the button “Download results” should now be enabled. Click the button to download the results from the server. After the download completes the result is added as a Meteo object in the windPRO project.