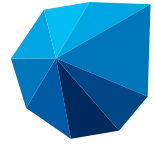


# EMD-WRF Indonesia Mesoscale Data



windPRO

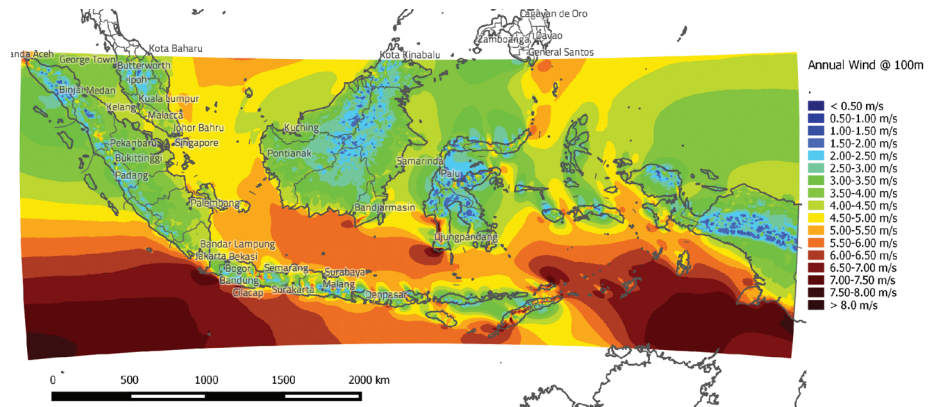
## EMD-WRF Indonesia Mesoscale Data Set

This mesoscale wind resource map is available for public use. The map was developed in 2014-2015 by EMD International A/S, Denmark, and financed by the Environmental Support Programme (ESP3)/ Danida. The project was implemented for The Ministry of Energy and Mineral Resources, Indonesia, and ESP3. The applied mesoscale model is WRF (Weather and Research Forecast Model) with a spatial resolution of 0.029° (ca. 3 km) and driven by Era-Interim global data from the period 2004-2014.

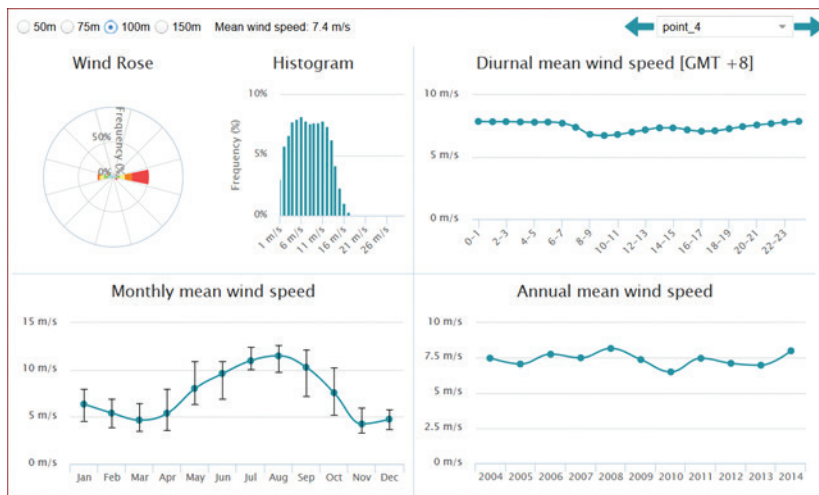
The coverage of the resource map can be seen in the figure to the right.

Contact - ESP3  
 Mail: [info@esp3.org](mailto:info@esp3.org)  
 Web: [www.esp3.org](http://www.esp3.org)  
 Phone: +62 21 5224483

Contact - EMD  
 Mail: [emd@emd.dk](mailto:emd@emd.dk)  
 Web: [www.emd.dk](http://www.emd.dk)  
 Phone: +45 96354444



Obtained from windPROSPECTING, sample graphics of the data can be seen below. These are taken from a central, high wind area in the resource map above at a height of 100m.



**EMD International A/S**  
[www.emd.dk](http://www.emd.dk)

Niels Jernes Vej 10 | 9220 Aalborg Ø | Denmark  
 tel: +45 9635 4444 | fax: +45 9635 4446 | email: [emd@emd.dk](mailto:emd@emd.dk)