

## QUICK GUIDE: MULTIPLE INSTANCES

### Purpose:

Beginning with windPRO 3.2 it is now possible to run multiple instances of windPRO at the same time.

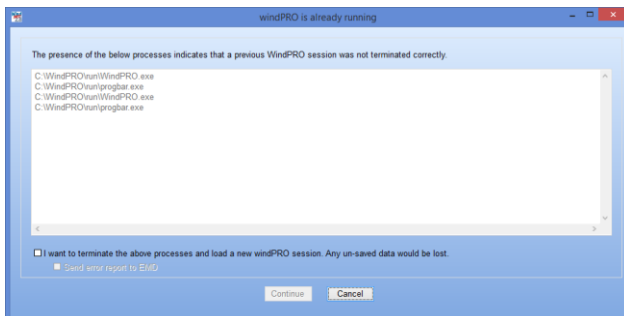
The idea is that running multiple instances should work the same way as you are used to from e.g. Microsoft Excel, Word and similar software, so running multiple instances of windPRO should feel natural and intuitive. However, we also know that many windPRO users are heavily influenced by many years of working with windPRO in a single instance, so this document will describe how this new feature will influence your daily work with windPRO.

### Outline of Guide:

1. Starting windPRO
2. Project recovery
3. Force closing windPRO
4. Miscellaneous

#### 1. STARTING WINDPRO

Before windPRO 3.2 the usual behavior when starting windPRO and you already had one instance running would be to show the kill-screen that simply offered you to kill the already running windPRO:



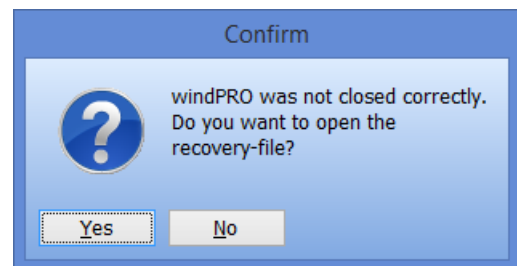
With the introduction of multi-instances in windPRO 3.2 this screen is no longer shown and instead a new instance of windPRO is simply started. The same behavior

happens if you start windPRO by double-clicking a windPRO project file.

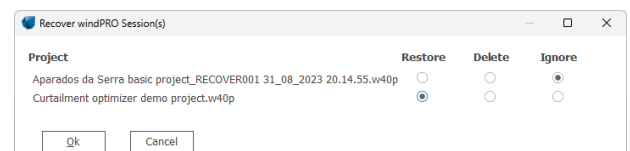
You can then work independently in each new windPRO instance.

#### 2. PROJECT RECOVERY

In previous versions of windPRO the project recovery window would be shown if windPRO had crashed (or killed by the user) without the project being properly closed:



With windPRO 3.2 multiple projects can be open simultaneously, and thus each project has its own recovery file. In case multiple windPRO projects are improperly closed, a recovery window will appear the next time you open windPRO:



**Restore:** Open windPRO with this project in recovery mode – this will be like answering YES in the old recovery dialog. Only one project can be recovered at a time.

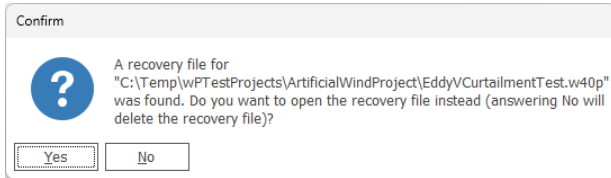
**Delete:** Delete the recoverable project from disk. It will NOT be possible to recover that project again. The last saved copy of the project is of course not deleted.

**Ignore:** Ignore the recoverable project for now. The next time you open windPRO, this recovery window will open again, so you can decide later what to do with that project.

## Quick Guide – Multiple instances

The above screen will only be shown if you have more recoverable projects.

If there is only *one* recoverable project this dialog will be shown:

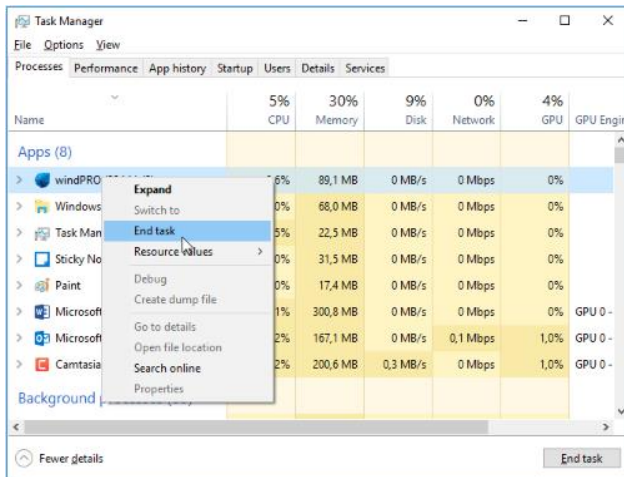


### 3. FORCE CLOSING WINDPRO

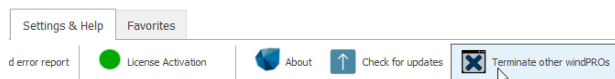
Before windPRO 3.2, a windPRO instance could be force closed by opening a new instance of windPRO.

This is no longer the case. Instead, you have two options for forcibly closing existing windPRO instances:

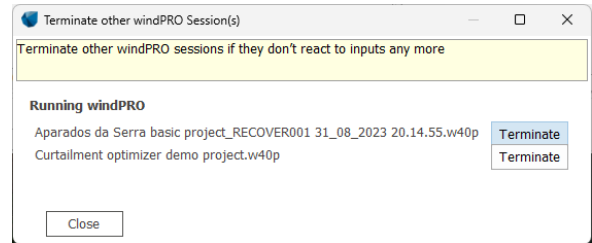
- 1) Using the Windows task manager – as has always been possible (CTRL+SHIFT+ESC).



- 2) Using the built-in "Terminate other windPRO" button in windPRO.



Using this option, you will not be able to terminate the current windPRO instance. For windPRO instances which have a project open, the project name will be listed:



### 4. MISCELLANEOUS

#### How many windPROs can I open simultaneously?

As many as your machine can handle.

#### What happens if I open the same project twice?

The second simultaneous instance of the same project can only be opened as a read only.

#### Is it "bad" to close windPRO through Windows Task Manager?

Windows Task Manager force closes windPRO in exactly the same way as windPRO force closed itself in previous versions.

#### Can I run windPRO 3.1 and 3.2 at the same time?

No, the multi-instance feature is only for version 3.2 and forward. If you have a windPRO 3.1 running and try to start a 3.2 instance you will be told that it is not possible, and you must close 3.1 before continuing.

#### Can I copy objects from one windPRO instance to another?

Yes. However, objects must not be more than one UTM zone away from the target project.

#### Does my project automatically close if I open a new project?

No, a new instance will always be opened on top.